

sweetgeorgia

PATTERN BUNDLE // EIGHT FREE PATTERNS





With easy cables and delicate ribbing, this quick-to-knit skullcap is a simple statement of comfort and style. Knitters of every level will delight in the lightly textural, yet deliciously warm results.

SKILL LEVEL

Intermediate

FINISHED MEASUREMENTS

18 (20 ½, 22 ¾)" / 45.5 (52, 58) cm brim circumference, lightly stretched

7 ¼ (8 ¼, 9 ¼)" / 18.5 (21, 23.5) cm length

YARN

1 skein SweetGeorgia Yarns Superwash Worsted in Fern (200 yds / 182 m per 4 oz / 115 g skein; 100% Superwash Merino).

NEEDLES & NOTIONS

Size 7 US / 4.5 mm circular needle, 16" / 40 cm long

Size 7 US / 4.5 mm set of five double-pointed needles

Adjust needle size if necessary, to obtain the correct gauge.

Stitch marker, yarn needle

GAUGE

20 sts and 28 rnds = 4" / 10 cm in Cable st, after blocking.

Please note that changes in gauge will affect yardage used and final measurements.

SPRING WATERS // by *Tabetha Hedrick*

ABBREVIATIONS

| | |
|---------|--|
| 1/1 LPC | slip 1 stitch to cable needle and hold in front, p1; k1 from cable needle. |
| 1/1 RPC | slip 1 stitch to cable needle and hold in back, k1; p1 from cable needle. |
| CO | cast on |
| K | knit |
| k2tog | knit 2 together |
| M | marker |
| P | purl |
| p2tog | purl 2 together |
| patt | pattern |
| pm | place marker |
| rep | repeat |
| rnd | round(s) |
| st(s) | stitch(es) |

PATTERN NOTES

This hat is worked in the round from the brim up. Change to double-pointed needles as your stitches decrease in the crown shaping.

The Cable Stitch is both written (Stitches Used) and charted for your preference.

The pattern directions begin after Stitched Used.

SweetGeorgia Yarns wants to ensure you have everything you need for your knitting success, including a Cables 101 course for Full Access Members or free foundational tutorials at:

www.schoolofsweetgeorgia.com.

STITCH INSTRUCTIONS

RIB ST (mult of 6 sts)

Rib Rnd: *P2, k2, p2; rep from * to end of rnd.

Rep Rib Rnd for patt.

CABLE ST (mult of 6 sts)

Rnd 1: *P1, 1/1 RPC, 1/1 LPC, p1; rep from * to end of rnd.

Rnd 2: *1/1 RPC, p2, 1/1 LPC; rep from * to end of rnd.

Rnds 3-6: *K1, p4, k1; rep from * to end of rnd.

Rnd 7: *1/1 LPC, p2, 1/1 RPC; rep from * to end of rnd.

Rnd 8: *P1, 1/1 LPC, 1/1 RPC, p1; rep from * to end of rnd.

Rnds 9-12: *P2, k2, p2; rep from * to end of rnd.

Rep Rnds 1-12 for patt.

PATTERN

BRIM

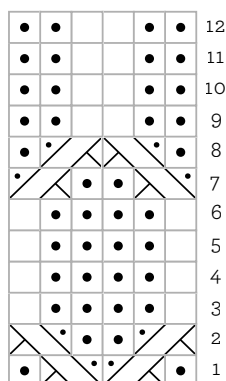
CO 90 (102, 114) sts. Pm and join to work in the rnd, being careful not to twist the sts.

Work Rib St for a total of 10 rnds.

BODY

Change to Cable St and rep rnds 1-12 for a total of 2 (3, 4) times.

CABLE ST CHART



KEY

| | |
|---|---------|
| □ | knit |
| ● | purl |
| ⊘ | 1/1 RPC |
| ⊙ | 1/1 LPC |

Sizes 18 (20 ½) / 45.5 (52) cm ONLY

Rep Rnds 1-8 of Cable St once more.

Purl 2 sts, then move the M 2 sts to the left for a new end-of-rnd location.

Size 22 ¾ / 58 cm ONLY

Rep Rnds 1-2 of Cable St once more.

Unknit the last st and move the M to the right of it for a new end-of-rnd location.

CROWN SHAPING

All sizes

Rnd 1: *K2, p2tog, p2, k2, p4; rep from * to last 6 sts, k2, p2tog, p2. 82 (93, 104) sts.

Rnd 2: *K2, p3, k2, p2tog, p2; rep from * to last 5 sts, k2, p3. 75 (85, 95) sts.

Rnd 3: *K2, p2tog, p1, k2, p3; rep from * to last 5 sts, k2, p2tog, p1. 67 (76, 85) sts.

Rnd 4: *K2, p2, k2, p2tog, p1; rep from * to last 4 sts, k2, p2. 60 (68, 76) sts.

Rnd 5: *K2, p2tog, k2, p2; rep from * to last 4 sts, k2, p2tog. 52 (59, 66) sts.

Rnd 6: *K2, p1, k2, p2tog; rep from * to last 3 sts, k2, p1. 45 (51, 57) sts.

Rnd 7: *K1, k2tog; rep from * to end of rnd. 30 (34, 38) sts.

Rnd 8: *K2tog; rep from * to end of rnd. 15 (17, 19) sts.

Rnd 9: *K2tog; rep from * to last 3 sts, k3tog. 7 (8, 9) sts.

Draw yarn through remaining sts.

FINISHING

Block hat to finished measurements. Weave in and trim ends.



Delicate lace against a backdrop of short bursts of colours is like a dream, as if the setting sun spreading out its silky hues of purple and pinks amongst the clouds. Light, soft, and sweet, this lovely scarf is a dreamy accessory to both knit and wear.

SKILL LEVEL

Beginner lace

FINISHED MEASUREMENTS

7 ½" / 19 cm wide and 65" / 165 cm long

YARN

1 skein SweetGeorgia Yarns Flaxen Silk Fine in Anthem (480 yd / 439 m total per 4 oz / 115 g; 65% Silk, 35% Linen).

NEEDLES & NOTIONS

Size 4 US / 3.5 mm needles

Adjust needle size if necessary, to obtain the correct gauge.

Yarn needle

GAUGE

24 sts and 29 rows = 4" / 10 cm in Sangria Lace, after blocking.

Please note that changes in gauge will affect yardage used and final measurements.



Gorgeous woven cables decorate the surface of this scarf, making it a luxuriously warm accessory for the cold winter months ahead. Worked in only two skeins of our Superwash Six, plush coziness is yours in no time at all.

SKILL LEVEL

Intermediate

FINISHED MEASUREMENTS

22" / 56 cm circumference, unstretched

6 ½" / 16.5 cm width

YARN

1 skein SweetGeorgia Yarns Superwash DK in Saffron (256 yds / 235 m per 4 oz / 115 g skein; 100% Superwash Merino Wool).

NEEDLES & NOTIONS

US 7 (4.5 mm) 16" circular needles

Adjust needle size if necessary, to obtain the correct gauge.

Stitch marker, cable needle, yarn needle

GAUGE

26 sts and 32 rnds = 4" / 10 cm in Cable patt, after blocking.

Please note that changes in gauge will affect yardage used and final measurements.



Wavy columns of lace combined with the smooth lustre of our new Bulletproof Sock yarn is a match made in heaven. Whether knit in a variegated or semi-solid colourway, this breezy shawlette brings a bright pop of 'gorgeous' to your spring wardrobe.

SKILL LEVEL

Beginner Intermediate

FINISHED MEASUREMENTS

44 ½" / 113 cm wingspan
15" / 38 cm center depth from back neck

YARN

2 skeins SweetGeorgia Yarns Mohair Silk Sock, one skein each in Lavender (MC) and Smitten (CC), (437 yds / 400 m per 3.5 oz / 100 g skein; 150% Superwash Merino Wool, 15% Silk, 15% Mohair, 20% Nylon).

NEEDLES & NOTIONS

Size 6 US / 4.0 mm circular needle, 32" (80 cm) long
Adjust needle size if necessary, to obtain the correct gauge.
Yarn needle

GAUGE

20 sts and 36 rows = 4" / 10 cm in Stockinette st, stretched as desired, and blocked.

Please note that changes in gauge will affect yardage used and final measurements.

EKANIS // by Tabetha Hedrick

ABBREVIATIONS

| | |
|-------|---|
| cm | centimeter |
| CO | cast on |
| k | knit |
| k2tog | knit 2 together (right-slanting decrease) |
| m | meter |
| mult | multiple |
| oz | ounces |
| p | purl |
| rep | repeat |
| RS | right side |
| sl | slip (as if to purl) |
| ssk | slip 2 stitches individually as if to knit, then knit those 2 stitches together through the back loops (left-slanting decrease) |
| st(s) | stitch(es) |
| WS | wrong side |
| wyif | with yarn in front |
| yo | yarn over |

PATTERN NOTES

This crescent-shaped shawllette is worked by knitting the border first, then transitioning into simple short-row shaping. To knit in a solid, single colour, simply disregard the colour change instructions.

The Border Pattern is both written (Stitches Used) and charted for your preference. The pattern directions begin after Stitches Used.

SweetGeorgia Yarns wants to ensure you have everything you need for your knitting success, including a Become a Lace Knitter course for Full Access Members or free foundational tutorials at: www.schoolofsweetgeorgia.com.

STITCH INSTRUCTIONS

BORDER PATT (mult of 7 sts + 2)

Row 1 (RS): Sl, *yo, k2tog, k5; rep from * to last st, k1.

Row 2 and all WS rows: Sl wyif, purl to last st, k1.

Row 3: Sl, *yo, k, k2tog, k4; rep from * to last st, k1.

Row 5: Sl, *yo, k2, k2tog, k3; rep from * to last st, k1.

Row 7: Sl, *yo, k3, k2tog, k2; rep from * to last st, k1.

Row 9: Sl, *yo, k4, k2tog, k1; rep from * to last st, k1.

Row 11: Sl, *yo, k5, k2tog; rep from * to last st, k1.

Row 13: Sl, *k5, ssk, yo; rep from * to last st, k1.

Row 15: Sl, *k4, ssk, k, yo; rep from * to last st, k1.

Row 17: Sl, *k3, ssk, k2, yo; rep from * to last st, k1.

Row 19: Sl, *k2, ssk, k3, yo; rep from * to last st, k1.

Row 21: Sl, *k, ssk, k4, yo; rep from * to last st, k1.

Row 23: Sl, *ssk, k5, yo; rep from * to last st, k1.

Row 24 (WS): Sl wyif, purl to last st, k1.

Rep Rows 1-24 for patt.

PATTERN

BORDER

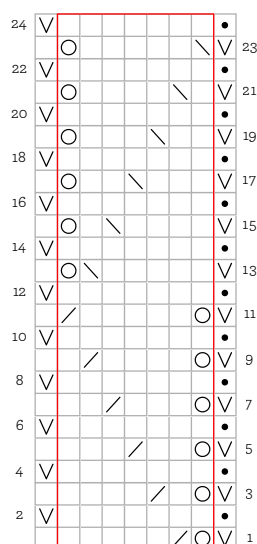
With MC, CO 254 sts.

Set-up Row (WS): Sl wyif, purl to last st, k1.

Begin Border Patt and work Rows 1-24 once.

Repeat Rows 1-23 once more.

BORDER PATT CHART



KEY

- knit on the RS, purl on the WS
- sl wyif on RS; sl wyif on WS
- purl on the RS; knit on the WS
- yo
- k2tog
- ssk
- 7 st rep

Next Row (WS): Sl wyif, knit to end.

Next Row (RS): Sl, knit to end.

Cut MC.

BODY SHAPING

Join CC.

Set-up Row (WS): Sl wyif, purl to end.

Row 1 (RS): Sl, k129, turn.

Row 2 (WS): Sl wyif, p5, turn. 124 sts rem on either side of the turning point gap.

Row 3: Sl, knit until 1 st before the gap created by the turning point, ssk, k3, turn.

Row 4: Sl wyif, purl until 1 st before the gap created by the turning point, p2tog, p3, turn.

Rep Rows 3-4 until all sts have been worked. 192 sts rem.

Cut CC.

TOP EDGING

Join MC.

Row 1 (RS): Sl, knit to end.

Row 2 (WS): Sl wyif, knit to end.

Rep last 2 rows once more.

Bind off loosely.

FINISHING

Block as desired. Weave in ends.



Get your spring glam on with this easy, breezy scarf! Bright tropical colours in alternating stripes pair perfectly with a super-simple chevron stitch and our ultralight CashLuxe Spark, for an accessory that is beautifully carefree.

SKILL LEVEL

Beginner

FINISHED MEASUREMENTS

68" / 172.5 cm long, 5" / 12.5 cm wide

YARN

2 skein(s) SweetGeorgia Yarns CashLuxe Spark, 1 each in Mint Julep (MC), Canary Island (CC) (400 yards / 365 m per 4 oz / 115g skein; 80% Superwash Merino Wool, 10% Cashmere, 10% Silver-toned Stellina).

NEEDLES & NOTIONS

Size 4 US / 3.5 mm needles

Adjust needle size if necessary, to obtain the correct gauge.

Stitch holder, yarn needle

GAUGE

25 sts and 30 rows = 4" / 10 cm in Stockinette st, after blocking.

Please note that changes in gauge will affect yardage used and final measurements.

NIXI // by Tabetha Hedrick

ABBREVIATIONS

| | |
|-------|---|
| CC | contrasting colour |
| cm | centimeter(s) |
| CO | cast on |
| dec | decrease(ing) |
| g | grams |
| k2tog | knit two stitches together |
| k | knit |
| m | meter(s) |
| MC | main colour |
| mm | millimeters |
| mult | multiple(s) |
| oz | ounces |
| p | purl |
| patt | pattern |
| pm | place marker |
| rep | repeat |
| RS | Right Side |
| s2kp | slip 2 stitches together knitwise, k1, pass slipped stitches over |
| ssk | slip 2 stitches individually as if to knit, then knit those 2 stitches together through the back loops (left-slanting decrease) |
| st(s) | stitch(es) |
| WS | Wrong Side |
| yd | yard(s) |
| yo | yarn over |

PATTERN NOTES

The scarf is worked in two halves and then grafted at the center back. The alternating stripes change position for each half.

SweetGeorgia Yarns wants to ensure you have everything you need for your knitting success, including free foundational tutorials at:

www.schoolofsweetgeorgia.com.

STITCH INSTRUCTIONS

CHEVRON ST (mult of 12 sts + 17)

Row 1 (RS): K2, ssk, k4, yo, k1, [yo, k4, s2kp, k4, yo, k1] twice, yo, k4, k2tog, k2.

Row 2 (WS): K2, purl to last 2 sts, k2.

Rep Rows 1-2 for patt.

PATTERN

FIRST HALF

With MC, CO 41 sts.

Set-Up Row: K2, purl to last 2 sts, k2.

Begin Chevron st and work even for a total of 44 rows, ending with Row 2.

Change to CC and continue working Chevron st for a total of 30 rows, ending with Row 2.

Change to MC and continue working Chevron st for a total of 30 rows, ending with Row 2.

Change to CC and continue working Chevron st for a total of 30 rows, ending with Row 2.

Change to MC.

Dec Row (RS): K2, ssk, k4, p1, [k11, p1] twice, knit to last 4 sts, k2tog, k2. 39 sts.

Row 1 (WS): K2, p5, k1, [p11, k1] twice, p5, k2.

Row 2: K7, p1, [k11, p1] twice, knit to end.

Rep Rows 1-2 until scarf measures 34" / 86 cm from cast-on edge, ending with Row 2. Place on st holder.

SECOND HALF

With CC, CO 41 sts.

Set-Up Row: K2, purl to last 2 sts, k2.

Begin Chevron st and work even for a total of 44 rows, ending with Row 2.

Change to MC and continue working Chevron st for a total of 30 rows, ending with Row 2.

Change to CC and continue working Chevron st for a total of 30 rows, ending with Row 2.

Change to MC and continue working Chevron st for a total of 30 rows, ending with Row 2.

Change to CC and work as follows:

Dec Row (RS): K2, ssk, k4, p1, [k11, p1] twice, knit to last 4 sts, k2tog, k2. 39 sts.

Row 1 (WS): K2, p5, k1, [p11, k1] twice, p5, k2.

Row 2: K7, p1, [k11, p1] twice, knit to end.

Rep Rows 1-2 until scarf measures 34" / 86 cm from cast-on edge, ending with Row 2. Place on st holder.

FINISHING

Using Kitchener st, graft the two scarf halves together. Weave in all ends. Block to measurements, exaggerating chevron points.





Ultra-silky, amazingly lightweight, and deliciously simple, this cowl is sure to delight from start to finish. Two colours, enhanced by the subtle zig-zag stitch pattern, promise a playful knit, endless possibilities, and a beautifully chic result.

SKILL LEVEL

Beginner Lace

FINISHED MEASUREMENTS

10 ¼" / 26 cm wide

62" / 157.5 cm long, before seaming

YARN

2 skeins SweetGeorgia Yarns CashSilk Lace, 1 each in Beach House (MC), Mirror Pond (CC) (400 yds / 365 m per 1.75 oz / 50 g skein; 55% Silk, 45% Cashmere).

NEEDLES & NOTIONS

Size 4 US / 3.5 mm needle

Adjust needle size if necessary, to obtain the correct gauge.

Yarn needle

GAUGE

25 sts and 28 rows = 4" / 10 cm in Zig-Zag Lace Patt, after blocking.

Please note that changes in gauge will affect yardage used and final measurements.

CANBY // by Tabetha Hedrick

ABBREVIATIONS

| | |
|-------|---|
| cm | centimeter |
| CC | Contrast Colour |
| CO | cast on |
| k | knit |
| k2tog | knit 2 together (right-slanting decrease) |
| m | meter |
| MC | Main Colour |
| mult | multiple |
| oz | ounces |
| p | purl |
| patt | pattern |
| rep | repeat |
| RS | right side |
| s2kp | slip 2 stitches together as if to knit, knit 1, then pass the slipped stitches over the knit stitch (centered double decrease) |
| sl | slip (as if to purl) |
| ssk | slip 2 stitches individually as if to knit, then knit those 2 stitches together through the back loops (left-slanting decrease) |
| st(s) | stitch(es) |
| WS | wrong side |
| yo | yarn over |

PATTERN NOTES

Cowl is worked flat and then seamed. Alternatively, you may prefer to use a provisional cast-on and graft the ends together.

The Zig-Zag Lace Pattern is both written (Stitches Used) and charted for your preference. The pattern directions begin after Stitches Used.

SweetGeorgia Yarns wants to ensure you have everything you need for your knitting success, including a Become a Lace Knitter course for Full Access Members or free foundational tutorials at: www.schoolofsweetgeorgia.com.

STITCH INSTRUCTIONS

ZIG-ZAG LACE PATT (mult of 12 sts + 3)

Row 1 (RS): K2, [k10, k2tog, yo] 6 times, k1.

Row 2 and all WS rows: K1, purl to last st, k1.

Row 3: K2, [yo, ssk, k7, k2tog, yo, k] 6 times, k1.

Row 5: K2, [k1, yo, ssk, k5, k2tog, yo, k2] 6 times, k1.

Row 7: K2, [k2, yo, ssk, k3, k2tog, yo, k3] 6 times, k1.

Row 9: K2, [k3, yo, ssk, k1, k2tog, yo, k4] 6 times, k1.

Row 11: K2, [k4, yo, s2kp, yo, k5] 6 times, k1.

Row 13: Knit.

Row 15: Knit.

Row 17: Knit.

Row 18: K1, purl to last st, k1.

Rep Rows 1-18 for pattern.

PATTERN

With MC, CO 75 sts.

Set-up Row (WS): K1, purl to last st, k1.

Begin Zig-Zag Lace patt and rep Rows 1-18 for a total of 7 times. Rep Rows 1-17 once more.

Cut MC. Change to CC.

Work Row 18 once.

Rep Rows 1-18 seven times.

Rep Rows 1-17 once.

Cut CC. Change to MC.

Work Row 18 once.

Rep Rows 1-18 three times.

Rep Rows 1-17 once.

Cut MC. Change to CC.

Work Row 18 once.

Rep Rows 1-18 three times.

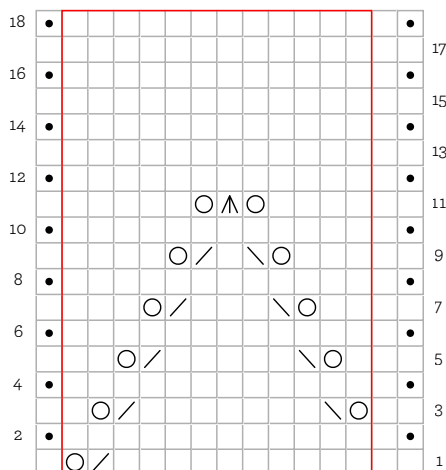
Rep Rows 1-17 once.

Bind off purlwise on next WS row.

FINISHING

Block to measurements. Seam cast-on and bind-off edges together. Weave in ends.

ZIG-ZAG LACE PATT CHART



KEY

- knit on the RS; purl on the WS
- purl on the RS; knit on the WS
- yo
- s2kp
- k2tog
- ssk
- 12 st rep



Keep your hands warm and bright with these deliciously soft and enchantingly colourful fingerless mitts. Subtle texture adorns the fabric in a Broken Rib variation, making for a comfy accessory that delights all year.

SKILL LEVEL

Beginner

FINISHED MEASUREMENTS

6 ½ (7 ½, 8 ¾) / 16.5 (19, 22) cm hand circumference

12" / 30.5 cm long

Sample size is 7 ½" / 19 cm.

YARN

1 skein SweetGeorgia Yarns Superwash DK in Songbird (256 yd / 234 m per 4 oz / 115 g skein; 1.01% Superwash Merino Wool).

NEEDLES & NOTIONS

Size 4 US / 3.5 mm set of 4 double-pointed needles

Adjust needle size if necessary, to obtain the correct gauge.

Stitch markers (3), stitch holder or waste yarn, yarn needle

GAUGE

22 sts and 32 rows = 4" / 10 cm in Stockinette St, in the round, after blocking.

Please note that changes in gauge will affect yardage used and final measurements.

SONGBIRD MITTS // by *Tabetha Hedrick*

ABBREVIATIONS

| | |
|--------|--|
| beg | begin(ning) |
| BO | bind off |
| cm | centimeter(s) |
| CO | cast on |
| dpn(s) | double pointed needles |
| inc | increase(ing) |
| k | knit |
| m | marker |
| M1 | Make 1 stitch: insert left needle, from front to back, under strand of yarn which runs between next stitch on left on left needle and last stitch on right needle; knit this stitch through the back loop. 1 stitch increased. |
| mult | multiple(s) |
| p | purl |
| patt | pattern |
| pm | place marker |
| rnd(s) | round(s) |
| sm | slip marker |
| St st | Stockinette stitch |
| st(s) | stitch(es) |
| yd | yard(s) |

PATTERN NOTES

The mitts are worked in the round from the cuff to fingers.

SweetGeorgia Yarns wants to ensure you have everything you need for your knitting success, free foundational tutorials at: www.schoolofsweetgeorgia.com.

STITCH INSTRUCTIONS

BROKEN RIB PATT (mult of 3 sts)

Rnd 1: Knit.

Rnd 2: *K2, p1; rep from * to end of rnd.

Rep Rnds 1-2 for patt.

STOCKINETTE ST

Every Rnd: Knit.

Rep Every Rnd for patt.

PATTERN

RIGHT MITT

Cuff

Loosely CO 36 (42, 48) sts. Pm and join for working in the rnd, being careful not to twist.

Begin Broken Rib patt and rep Rnds 1-2 for a total of 46 rnds, until cuff measures a finished length of 5 ¾" / 4.5 cm.

Change to St st and work even for 18 rnds or until cuff measures a finished length of 8" / 20 cm.

Thumb Gusset

Set-Up Rnd: M1, pm (thumb marker), knit to end of rnd. 37 (43, 49) sts.

Knit one rnd.

** Inc Rnd: M1, knit to m, M1, sm, knit to end of rnd. 2 sts inc'd.

Knit 2 rnds.**

Rep from ** to ** 5 (6, 7) more times. 49 (57, 65) total sts, 13 (15, 17) sts between the 2 markers.

Divide for Thumb

At beg of rnd, put the next 13 (15, 17) sts onto a stitch holder or waste yarn and remove thumb marker. Using the Backward Loop Method, CO 0 (3, 3) sts, knit to end of rnd.

Hand

Work in St st until mitt measures a finished length of 11" / 28 cm or until mitts measure 1" / 2.5 cm less than desired length.

Change to Broken Rib patt and rep Rnds 1-2 for a total of 8 rnds. BO loosely in patt.

Thumb

Place 13 (15, 17) held thumb gusset sts evenly on 3 dpn. Join yarn at beg of sts with RS facing, k15, then pick up and knit 2 (3, 1) st(s) across thumb gap. 18 sts.

Pm and join for working in the rnd.

Work in St st until thumb measures a finished length of ¾" / 2 cm from pick-up rnd. Change to Broken Rib patt and rep Rnds 1-2 for a total of 4 rnds.

BO loosely in patt.

LEFT MITT

Cuff

Loosely CO 36 (42, 48) sts. Pm and join for working in the rnd, being careful not to twist. Work as for Right Mitt to Thumb Gusset.

Thumb Gusset

Set-Up Rnd: K21, pm, M1, pm, knit to end of rnd. 37 (43, 49) sts.

Knit one rnd.

** Inc Rnd: K21, sm, M1, knit to m, M1, sm, knit to end of rnd. 2 sts inc'd.

Knit 2 rnds.**

Rep from ** to ** 5 (6, 7) more times. 49 (57, 65) total sts, 13 (15, 17) sts between the two markers.

Divide for Thumb

Next Rnd: K21, put the next 13 (15, 17) sts onto a stitch holder or waste yarn and remove the two thumb markers. Using the Backward Loop Method, CO 0 (3, 3) sts, knit to end of rnd.

Hand & Thumb

Work as for Right Mitt.

FINISHING

Weave in loose ends. Block lightly.



Add a little elegance and a bright pop of colour to your winter wardrobe with this lovely scarf. Delicate herringbone lace travels in columns above a ruffled flare of ribbing. It's just enough sass and the perfect amount of warmth for those cool days.

SKILL LEVEL

Intermediate

FINISHED MEASUREMENTS

4 ½" body width, 72" length

YARN

1 skein SweetGeorgia Yarns Merino Silk Fine in Juicebox (380 yds / 347 m per 3.5 oz / 100 g skein; 50% Silk, 50% Merino).

NEEDLES & NOTIONS

Size 3 US / 3.25 mm needles

Adjust needle size if necessary, to obtain the correct gauge.

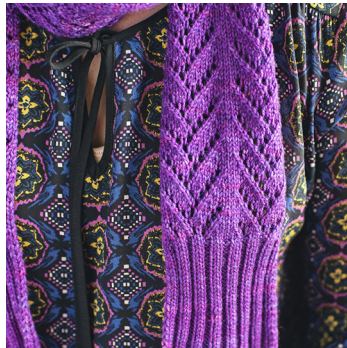
Stitch holder, yarn needle

GAUGE

28 sts and 31 rows = 4" / 10 cm in Body St, stretched heavily and blocked.

29 sts and 34 rows = 4" / 10 cm in K2p5 Rib, stretched heavily and blocked.

Please note that changes in gauge will affect yardage used and final measurements.



sweetgeorgia

SweetGeorgia Yarns Inc. // unapologetic colour + craft since 2005
1562 Rand Avenue, Vancouver, BC V6P 3G2 Canada
sweetgeorgiayarns.com